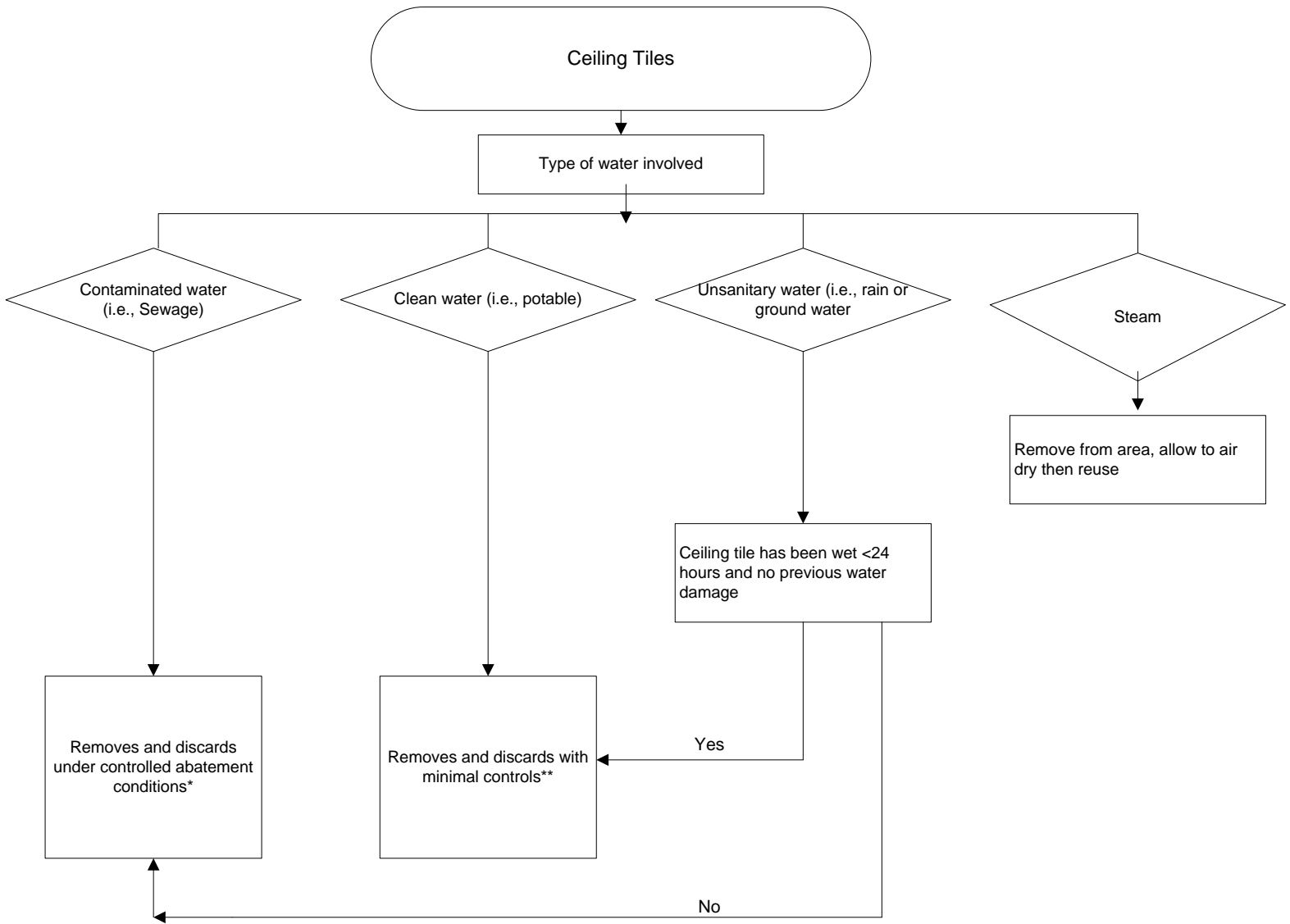


Decision-Making Regarding Flooding and/or Wet Materials



*** Controlled abatement activities include use of controlled airflow and personal protective equipment during tile removal, then use of a plastic bag or other container to hold the damaged tile after removal and during transport.**

****Minimal abatement activities include use of dust and airflow control then containment of the damaged tile during removal and transport.**

Based upon North Carolina Guidelines for Moisture Management and Mold Remediation in Healthcare Facilities

Algorithm composed by:
Ruth Carrico PhD RN CIC
University of Louisville
School of Public Health and Information Sciences
Lezlie Barth RN
Kosair Children's Hospital
Louisville, KY
Rev. 08/08