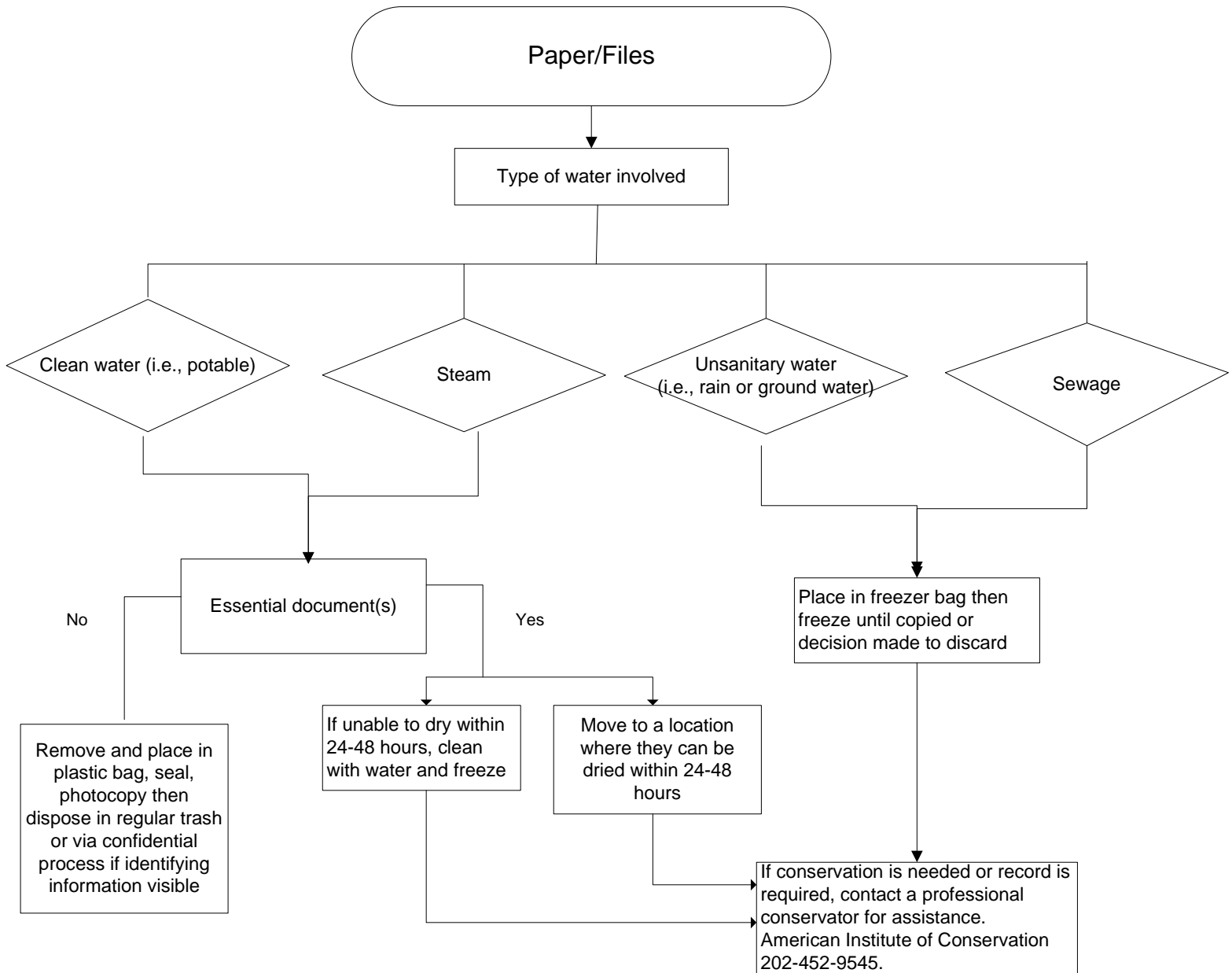


# Decision-Making Regarding Flooding and/or Wet Materials



Based upon North Carolina Guidelines for Moisture Management and Mold Remediation in Healthcare Facilities

Algorithm composed by:  
Ruth Carrico PhD RN CIC  
University of Louisville  
School of Public Health and Information Sciences  
Lezlie Barth RN  
Kosair Children's Hospital  
Louisville, KY  
Rev. 08/08